

Visual story

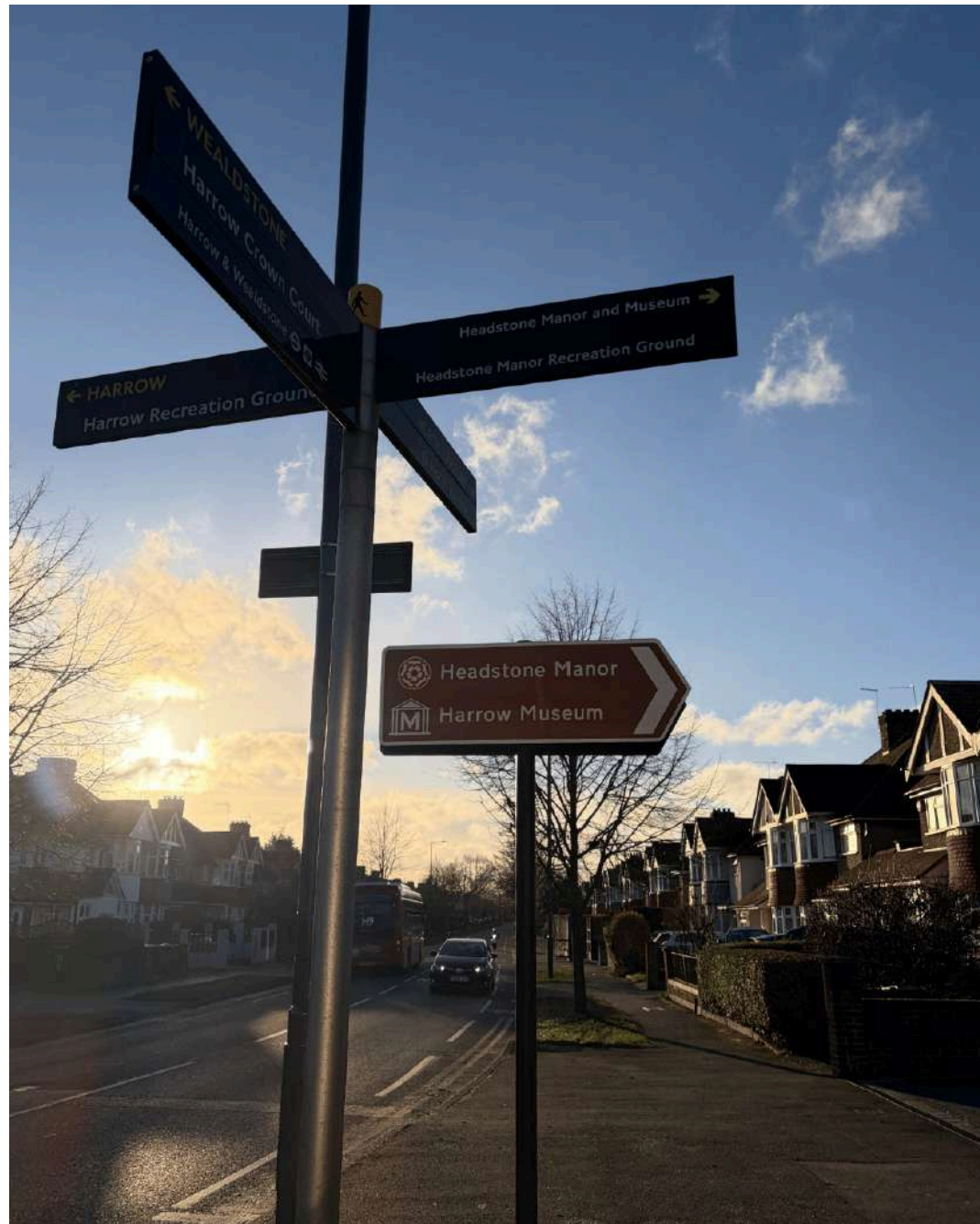
Welcome to Headstone Manor & Museum:

A visual story for anyone who wants to prepare for a visit to our museum.

This will tell you about:

- How to get here
- What and who you might meet
- Sounds, lights and smells of the museum
- What you can touch
- Accessibility

How to get here?



Bus:

- You can get here by taking the [H9/H10](#) bus, get off at [Pinner View](#), walk for 3 minutes.

OR

Train and Tube:

- [Harrow & Wealdstone station](#) by Bakerloo/Overground /National Rail + [15 minute walk](#)/ take [H9 bus](#) from the station to [Pinner View](#).

OR

- Get off at [Headstone Lane](#) taking the Overground + [15 minute walk](#).

OR

- [North Harrow](#) by Metropolitan line + [15 minute walk](#) / [H10](#) bus from the station to [Pinner View](#).

How to get here?

After you get off from the bus, follow the path along [Pinner view](#).

OR

If you walk from [Headstone Lane station](#), you will see a children's playground, then follow the path to the museum.



We also have a [car park](#) in Pinner View, which is a 3 minute walk from the museum entrance.



Welcome!

Welcome to Headstone Manor & Museum!

Before you enter the gate, you will see the moat on your right with different kind of birds!

Walk along the path and you will see our gate.



The Moat Café



On the left-hand side, is our Visitor Centre and Café. Our café staff are happy to help. You can also take a look at the museum shop or grab a drink here.

It might get a bit crowded and noisy if the café is full.

There is an accessible toilet to the right as you go in.



The Small Barn



You will see another building on the right-hand side, which is the Small Barn. This is the entrance to the museum!



Inside the Small Barn, there are exhibition boards and display cases introducing Stone Age, Roman, and Anglo Saxon Harrow.

There will be a short film playing with sounds on. You can also find several benches here to sit down while watching the video.



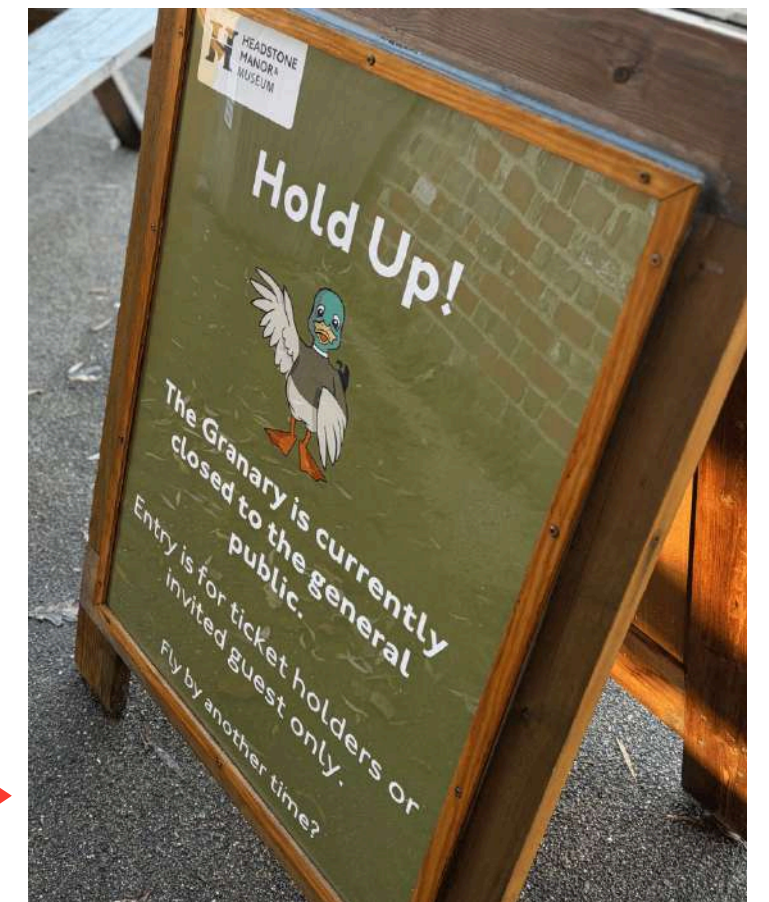
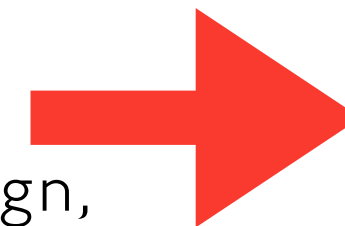
The Granary Learning Centre



After you go through the Small Barn, you will see the Great Barn in front of you and the Granary on the left-hand side

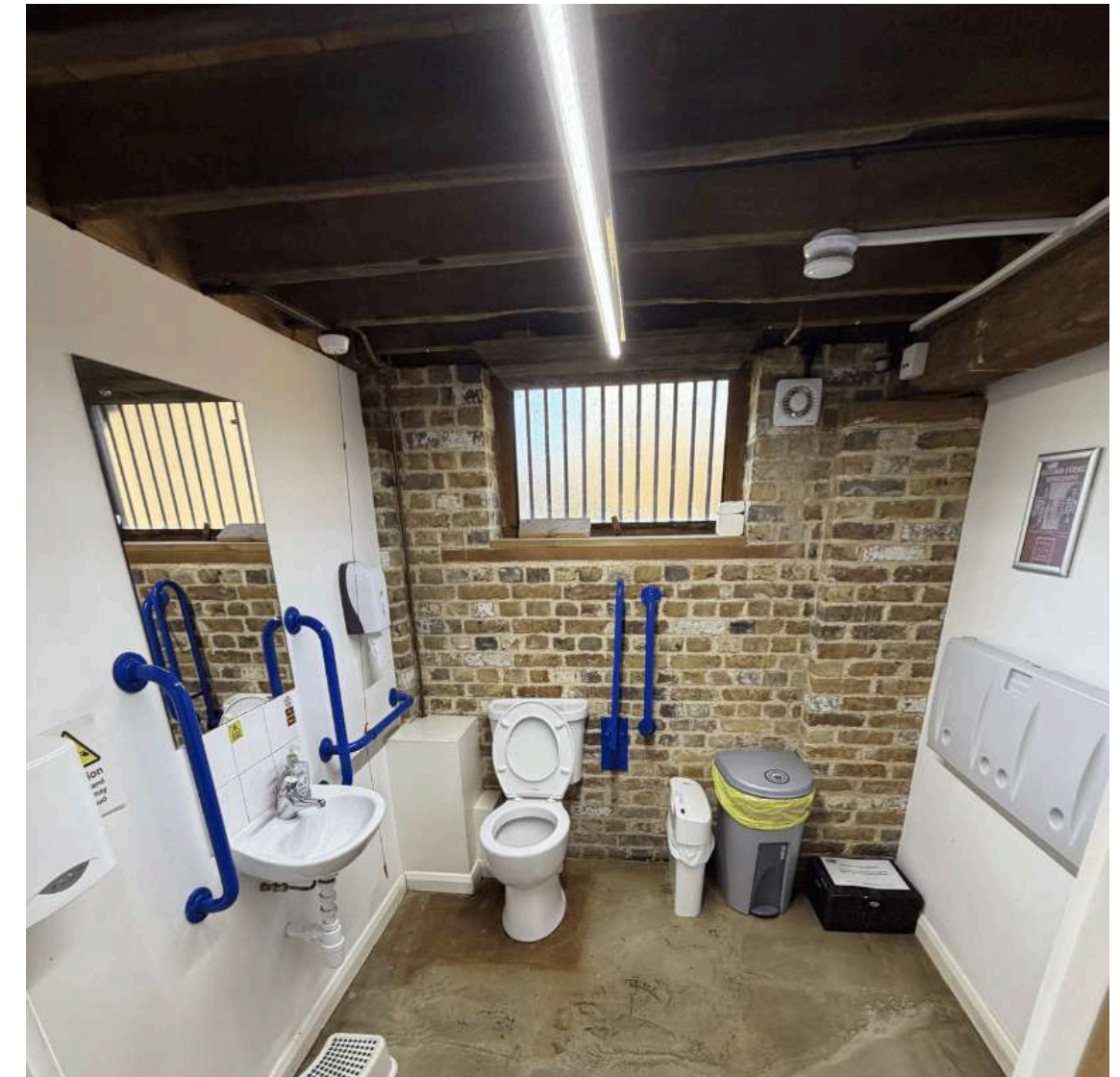
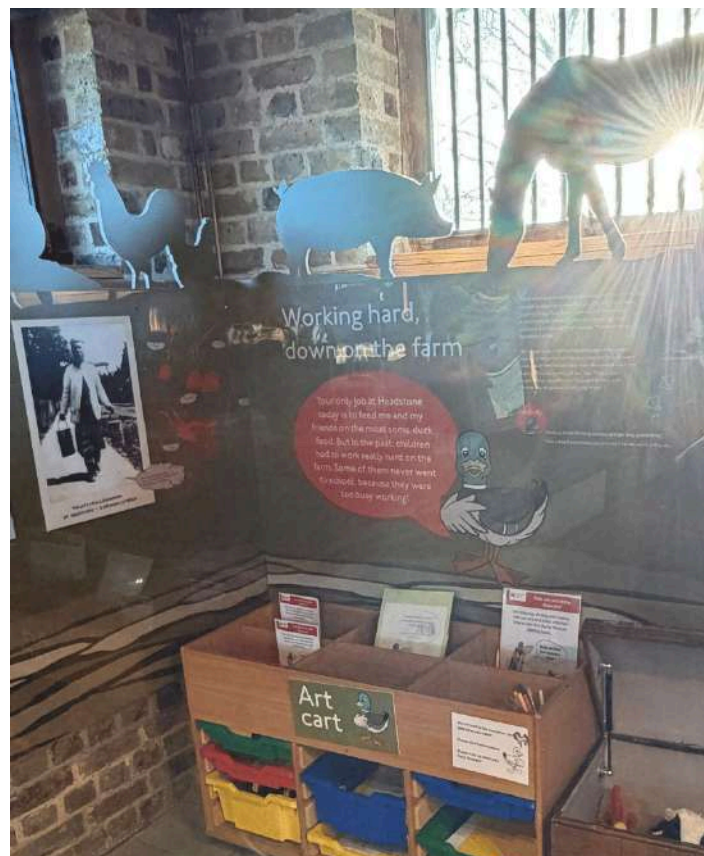


If a school group is visiting, the Granary might be closed. This sign, next to the Granary's front door, will tell you if it is open.



The Granary Building

Downstairs there is an Art Cart, you can help yourself to pencils and colouring, do some art activities, and play with some soft toys too!



There is an accessible toilet if needed.



The Great Barn



As you come out from the Granary the Great Barn is in front of you. It only opens for special events like weddings, markets, or community events.



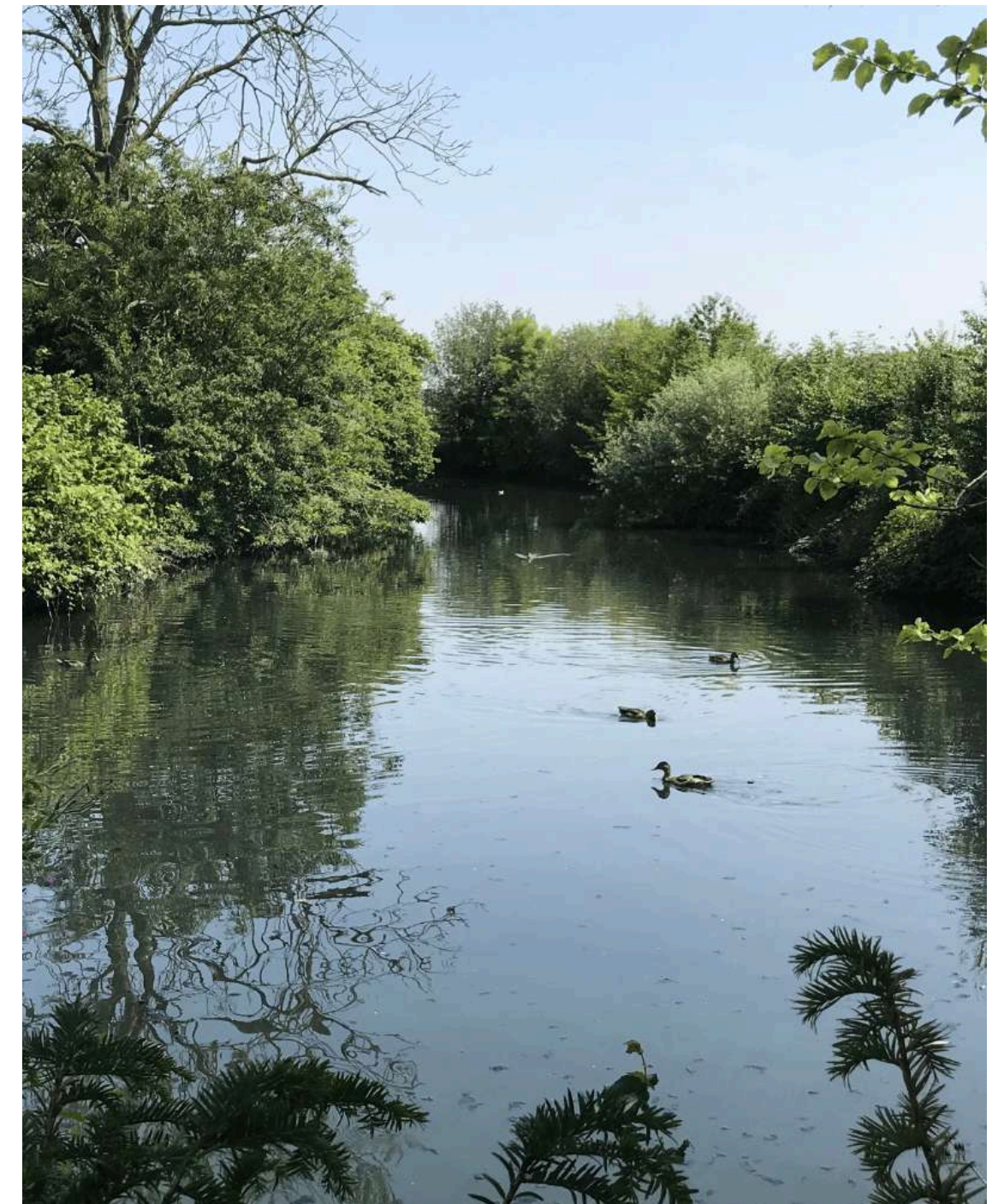
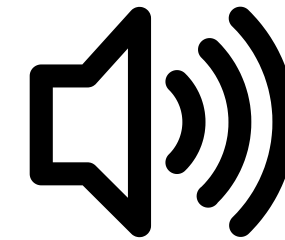
Follow the sign to the museum. The main museum is in the [Manor House](#).

To the Manor House

Cross the bridge to the Manor House.



You will go over the Moat.
Look out for fish and ducks!



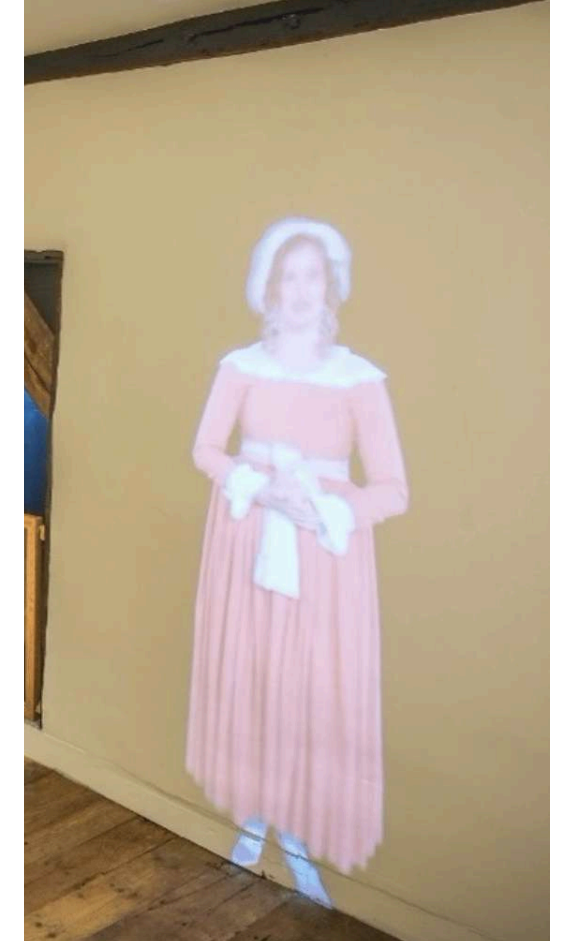
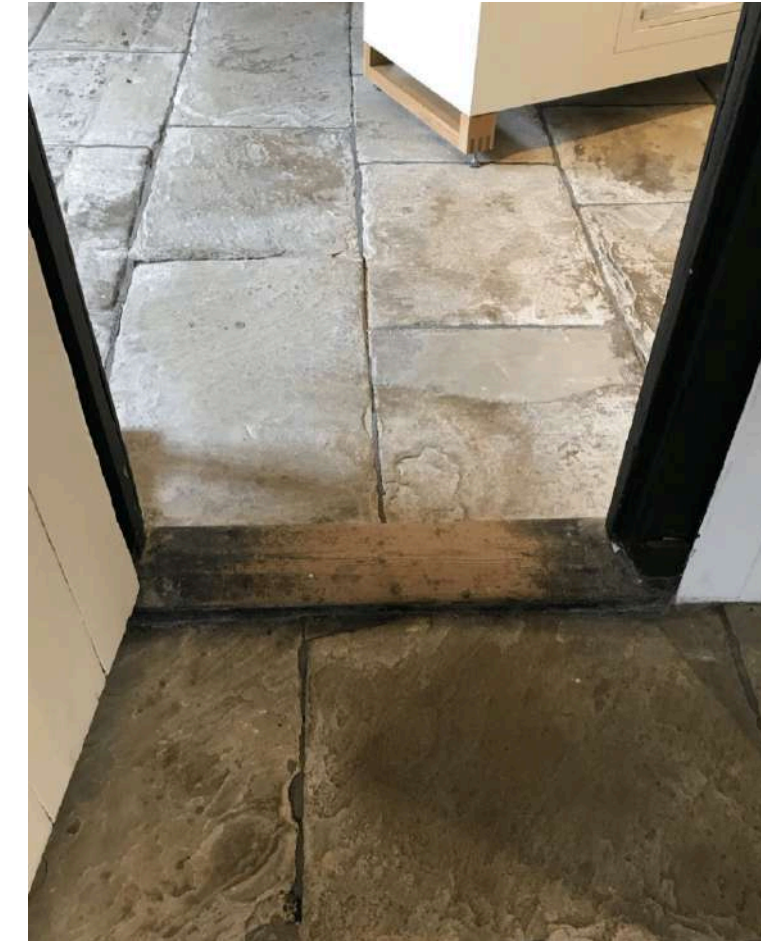
Inside the Manor House



They will be wearing a badge that looks like this

Here you can take a look at the Community Cupboard in the corner, the community exhibition space.

It is designed by Harrow's community groups. It is updated regularly and tells themed stories about Harrow.



You will arrive at the first room in the Manor House, the Parlour.

Our House Wardens will meet you here. They are there to help you and answer any questions!



There is a model of the Manor House in this room which you can touch and move around.

You can also pick up a map and trail of the Manor House for free. This gives you more information about the museum.

Turn left out of this room.

The Manor House is Grade I listed building which means that it is very old and important, and it needs protecting. The building is old so some of the floors are uneven and there are steps into some of the rooms. Be careful!

Some of the room have motion triggered sounds or videos with speakers and sounds on.



Special Exhibition Room



The room on the left is the Special Exhibitions Room.

This changes every few months with different temporary exhibitions. Come and find out what is on now!



There is an accessible toilet at the end of the corridor, just before the Exhibitions Room.

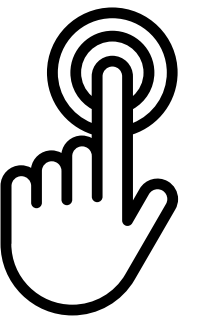


Modern Harrow & The Bakehouse

This is the Modern Harrow Room.
This room focuses on Harrow in WW2 as
well as other more recent history.



You can go up the stairs in this room to the Bakehouse.

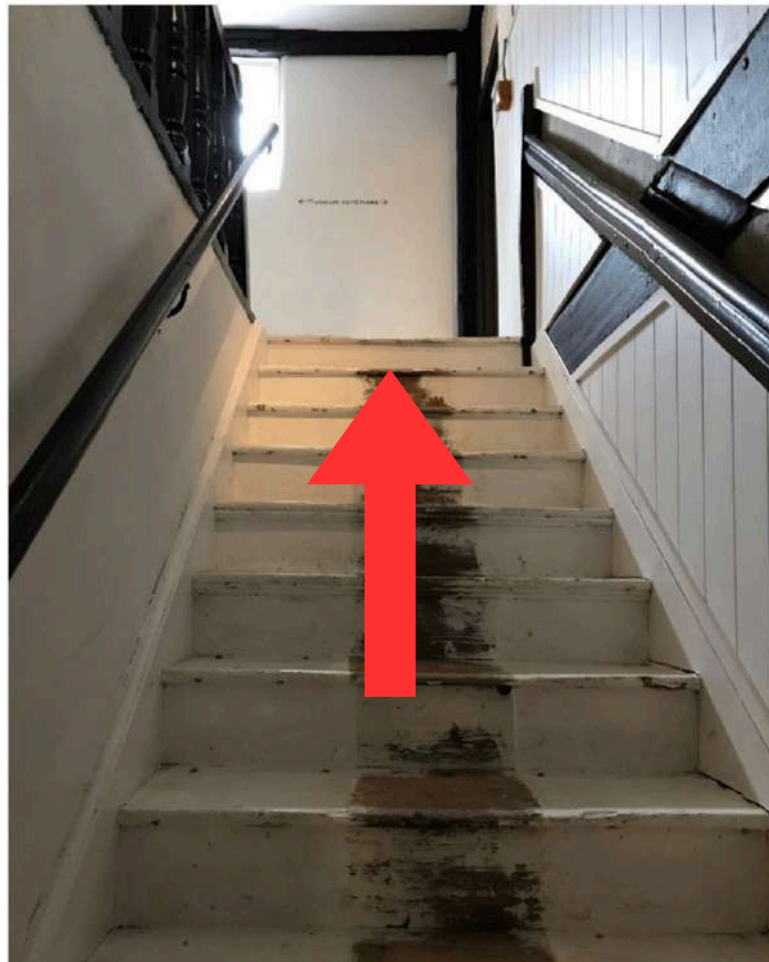


Welcome to the Bakehouse!
You can have lots of fun playing in here and dressing
up!

Inside the Manor House

The museum continues upstairs.

You can also go up in the lift at the back of the Modern Harrow room.



Metroland Room



Turn right at the top of the stairs!

This is the Metroland Room - you can learn more about the changes in Harrow after the Metropolitan line reached the area.

Push the button on the panel and a voice will start talking.



You can move the maps up and down by pressing the buttons!



Whitefriars Room

Walk straight through the Metroland room to get to the Whitefriars Room.



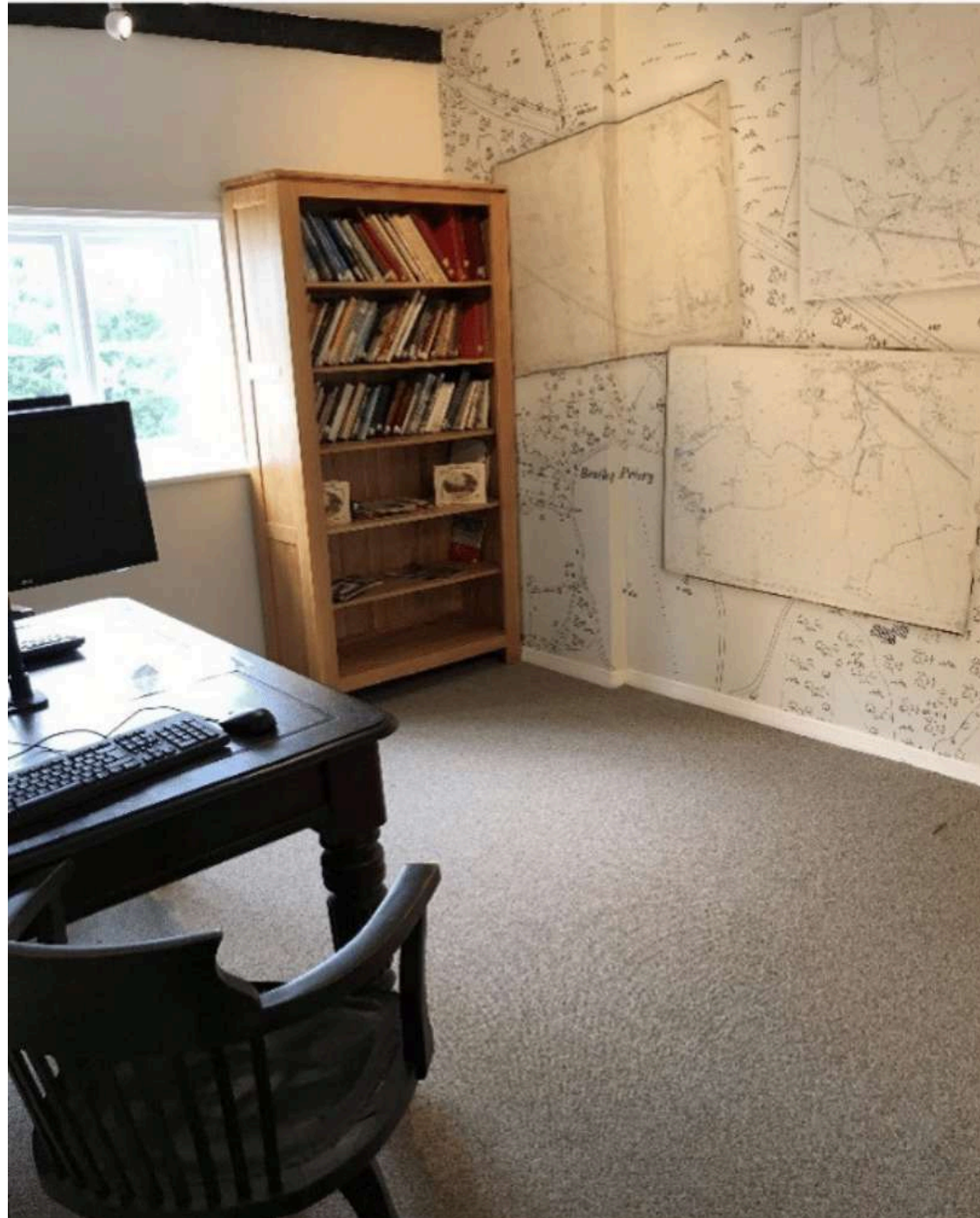
You can learn more about the glass-making industry of Harrow in the room! There are a lot of pretty and colourful glasses with lots of different shapes on display.

Next to the Whitefriars Room is the room where the lift comes up.

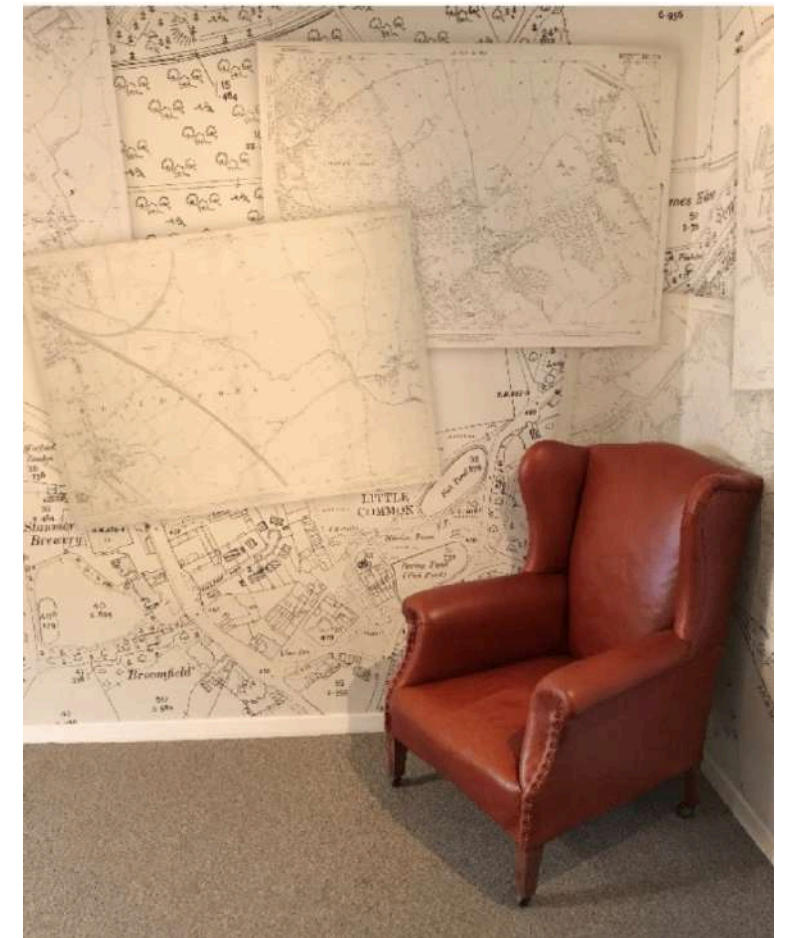
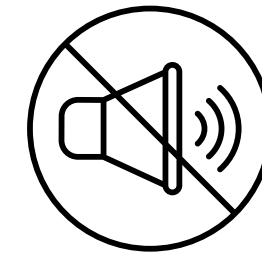


Local History Room

Walk through to get to the Local History Room!



It is a quiet room.
You can read books about Harrow
here.
If needed, take a break here and
enjoy the quiet!



Industrial Harrow Room



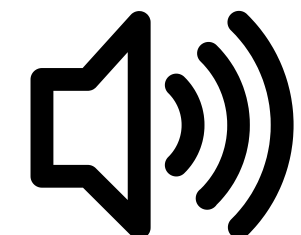
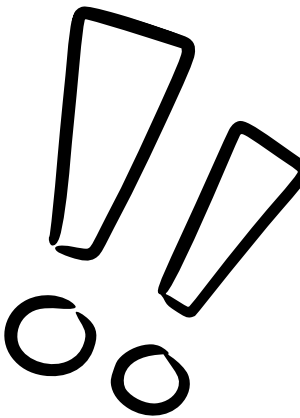
When you walk back out to the top of the stairs, in front of you is the Industrial Harrow Room.

You can learn more about the factories of Harrow in the 18-20th Century.

Don't forget to have a closer look of this old camera. It's one of a kind!

A video of Mr Hall the farmer will start to play when you walk past him.

He will tell you about how his life changed as a farmer.

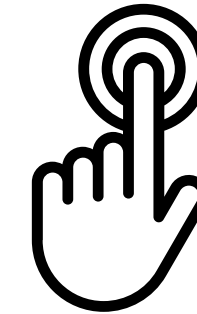
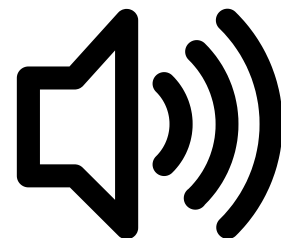


Victorian Room



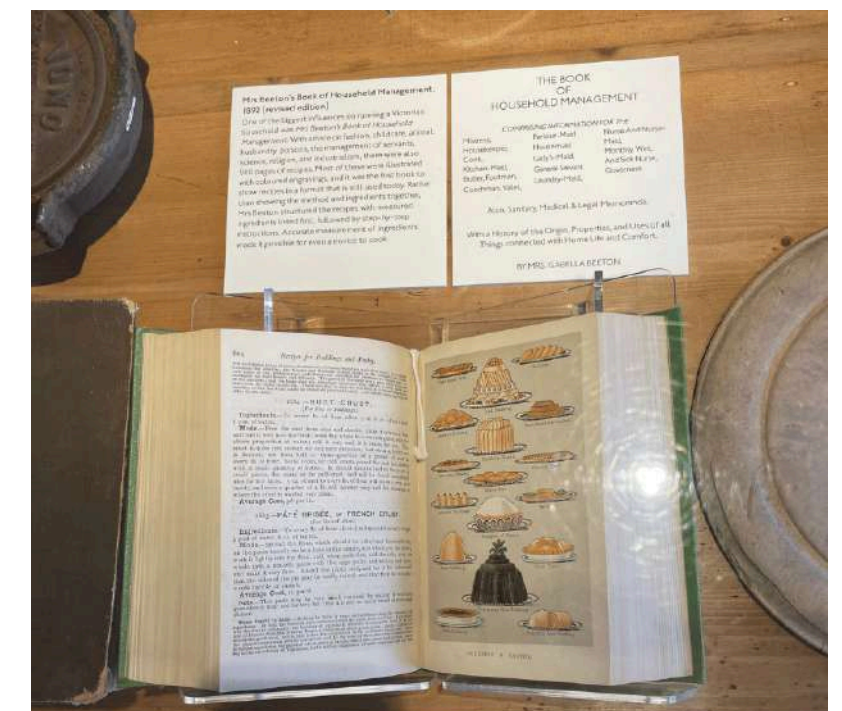
Walk past the stairs and down the corridor to get to the Victorian room:

A voice will play when you walk into the room - she is talking about the arrival of the railway in Harrow!



In this room, there is a Victorian train coach where you can play a boardgame with your family and friends.
You can find out more about life of people living in Victorian Harrow.

Don't forget to take a look at Mrs. Beeton's cook book. She is a famous person from Harrow!



Georgian Room



To the right of the Victorian room, is the Georgian room.

The door to this room is narrow so it can be difficult to go through in a wheelchair!

A projection of a lady called Mrs. Bucknall appears on the wall when you walk in the room.



Stuart School Room & Tudor Room



Next is the Stuart Room which is up two steps. You can find out more about Harrow School in here.



Go down these stairs to get to the next room: Tudor Room.

The stairs have a rope banister. Or you can take the lift back downstairs.



Great Hall



Continue down the next set of steps to get to the Great Hall.

It was a place for parties and dinner in the past. Long tables were placed along the room with possibly an open fire in the middle.

Mind your head coming down the stairs!



The Buttery



This is the Buttery – it's very cold in here!
They used it as a chilled pantry!



If you push the button on the panel a voice
will start playing.



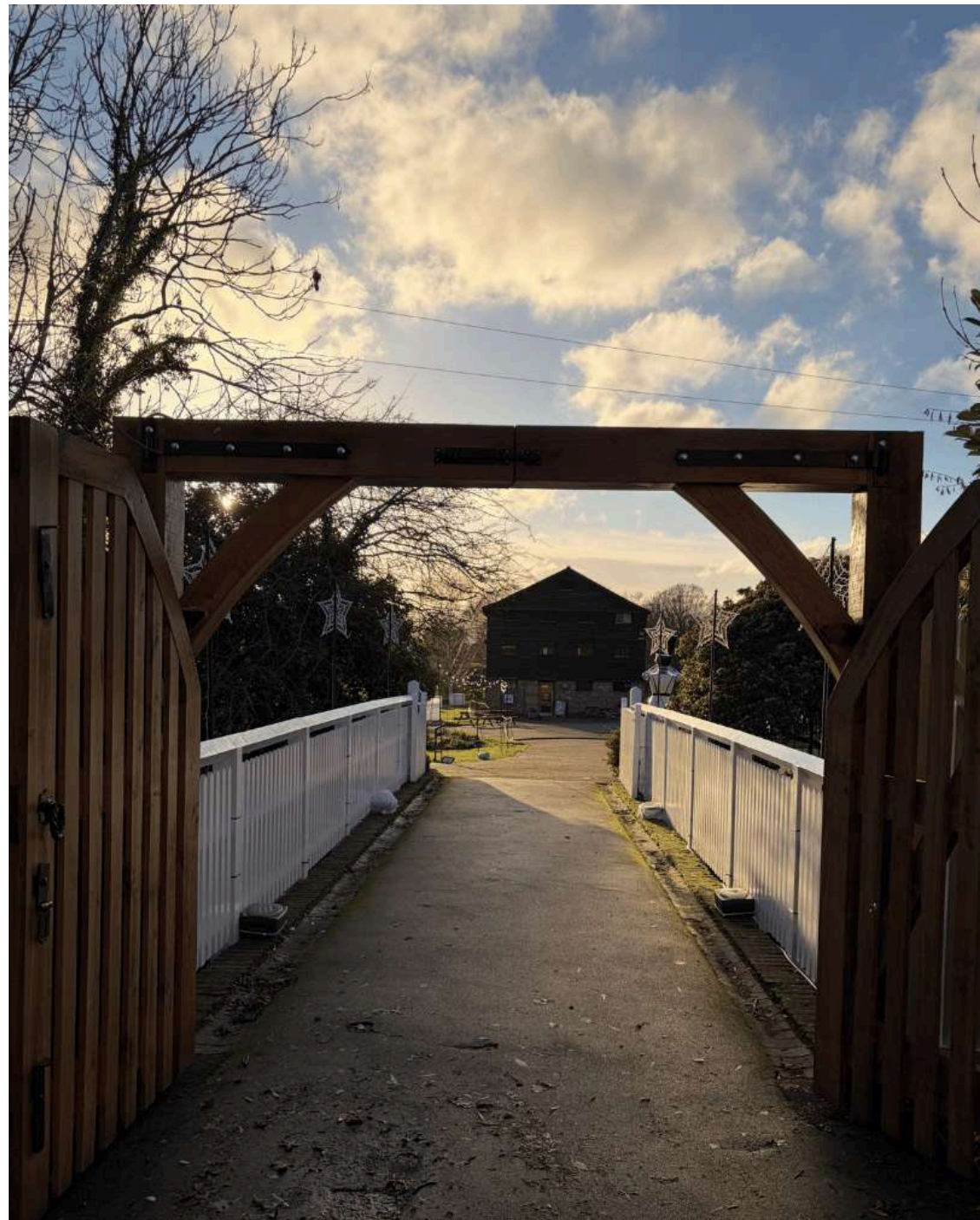
To the Garden



Leave the Manor House by the back door to see the Garden.



Don't forget to enjoy nature before you leave the museum.
There are plants and animals all around!



Follow the same path, back across the bridge,
to exit the museum.

**Looking forward to
seeing you!**